

LINESET SCHEDULE	
#	LABEL TRIM
CYC WALL	
9	TRAVELER TRIM
8	UNUSED TRIM
7	4 ELECTRIC 25'-0"
6	CIRCLE SHADOW TRIM
US BRIDGE	
D	LEGS 26'-9"
C	BAND FLAT 26'-9"
BRDGI G. DROP & LEGS 26'-9"	
5	3 ELECTRIC & FLAT 26'-5"
4	UNUSED GRID
3	2 ELECTRIC 27'-0"
2	1 ELECTRIC 27'-0"
1	UNUSED GRID
TRAIL/LX, BORDER, & LEGS 28'-6"	
B	UNISTRUT 25'-0"
MAIN CAT BACK	
A	UNISTRUT 25'-0"

INSTRUMENT KEY

- ETC Source Four 14 Degree 750w
- ETC Source Four 19 Degree 750w
- ETC Source Four 26 Degree 750w
- ETC Source Four 36 Degree 750w
- Altmann Par 64 MFL 1000w
- Altmann Par 64 WFL 1000w
- Chauvet Ovation P915 260w
- Chauvet Revo E-3 260w
- Martin MAC Viper 1225w
- MDG ATMe Haar
- ADJ Entour Chih 800w

LABEL LEGEND

- COLOR 1381
- TEXTURE 1
- UNIT NUMBER 700
- CHANNEL 700

ACCESSORY KEY

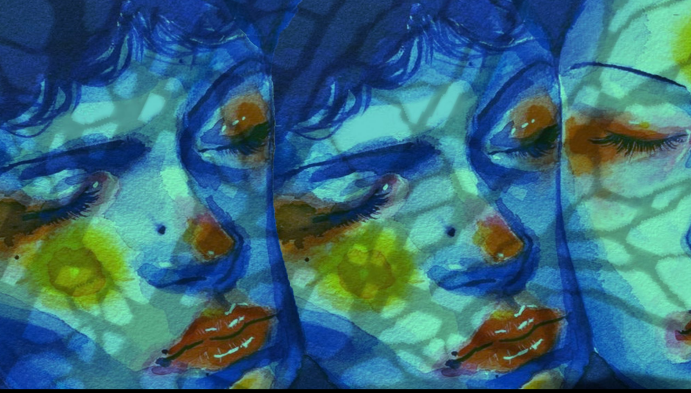
- Drop-in Iris
- 10in Top Hat
- Rosco I-Cue
- DMX Iris

NOTES

- Please put all channels on Main Cat Back on side arms
- Please patch all Ovation 915 FC's in 18ch mode
- Please have extra cuts of color, frost, texture, and heat shield ready at focus

REVISIONS

- 02.28.23 Prelim
- 03.01.23 String lights Added
- 03.24.23 LEDs added, Fogger swapped out
- 03.28.23 LEDs added, barrels swapped out
- 04.07.23 Added chn 404-9 for aisles, removed pars on MainCat



MYTHS AND HYMNS

Written by: Adam Guettel

DIRECTOR
EVANGELINE WHITLOCK

SCENIC DESIGNER
LILY TOMASIC

COSTUME DESIGNER
ZOE COX

WIG AND MAKEUP DESIGNER
BEKAH TOONE

SOUND DESIGNER
KATELYN GILLETE

ASST. LIGHTING DESIGNER
ASH NEECE

ASST. LIGHTING DESIGNER
CLAIRE WINSTON

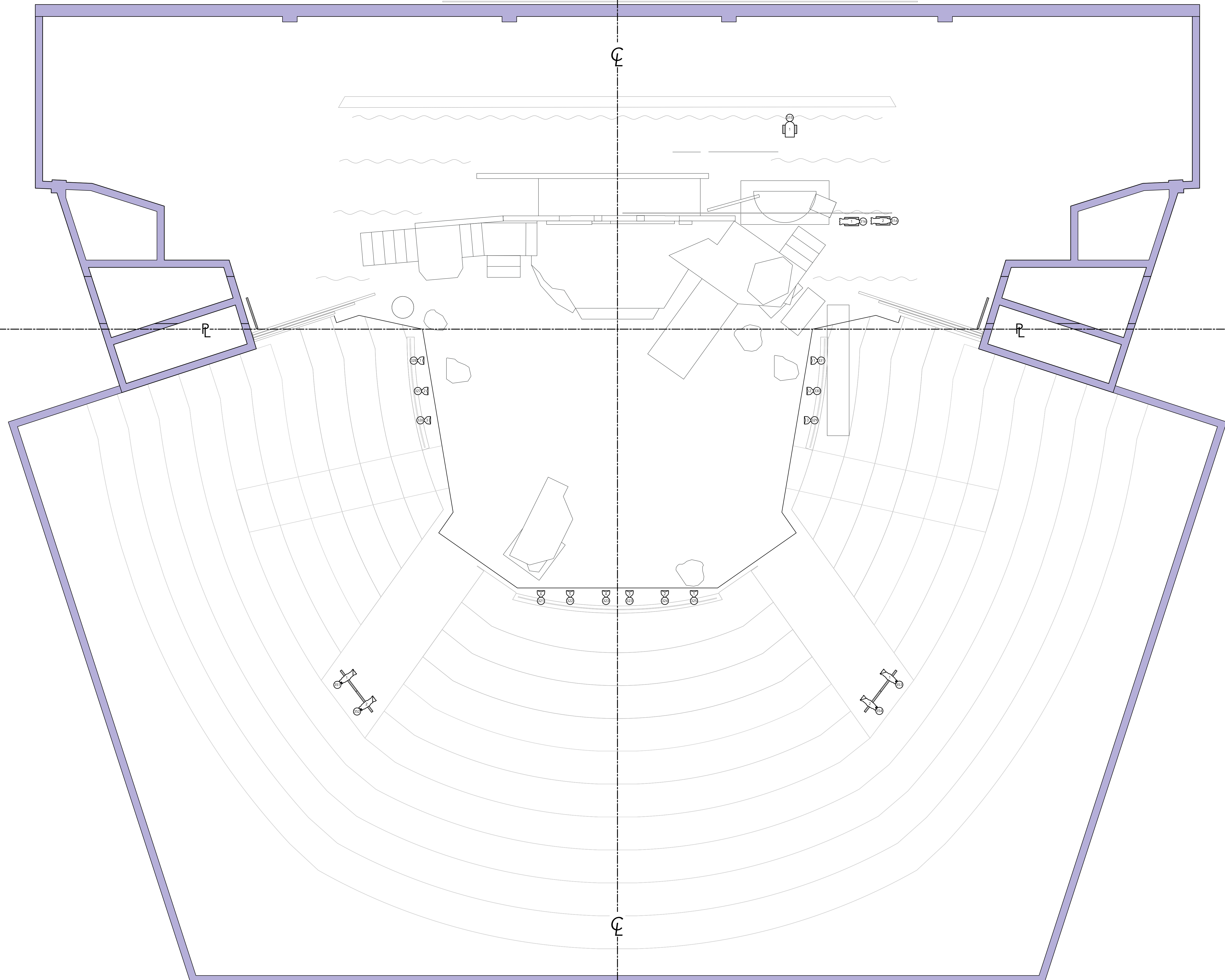
HEAD ELECTRICIAN
AUDREY WUBBENA

VIRGINIA JACKSON BROWNING THEATER
LORETTO-HILTON CENTER FOR THE PERFORMING ARTS
130 EDGAR RD ST. LOUIS, MO 63119

LIGHTING DESIGN & DRAFTED BY:
 ERIN RILEY
314.933.0623
erinriley031@gmail.com

OVERHEAD PLOT

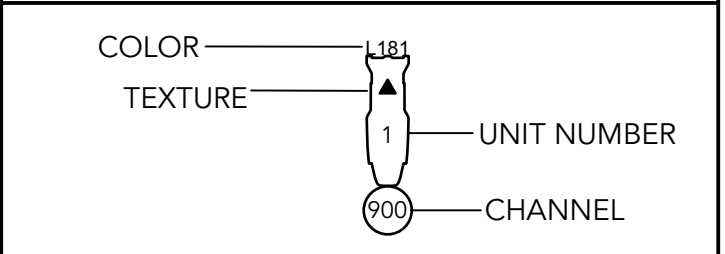
PLATE 1 OF 4
SCALE: 1/4" = 1'-0"
WHEN PRINTED ON 24x36



INSTRUMENT KEY

- ETC Source Four 14 Degree 750w
- ETC Source Four 19 Degree 750w
- ETC Source Four 26 Degree 750w
- ETC Source Four 36 Degree 750w
- Altmann Par 64 WFL 1000w
- Altmann Par 64 WFL 1000w
- Chauvet Ovation P915 260w
- Chauvet Reve E-3 260w
- Martin MAC Viper 1225w
- MOG ATMe Hazer
- ADI Entour Chl 800w

LABEL LEGEND



ACCESSORY KEY

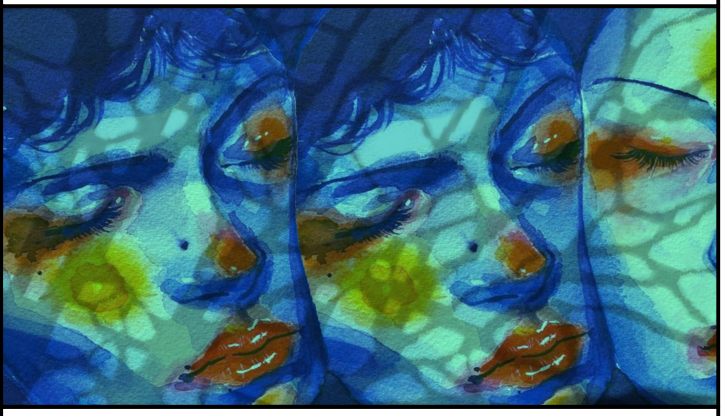
- Drop-in Iris
- 10in Top Hat
- Rosco I-Cue
- DMX Iris

NOTES

- Video monitors will be placed in Voms
- Please have extra cuts of color, frost, texture, and heat shield ready at focus

REVISIONS

- 02. 28. 23 Prelim
- 03. 01. 23 String lights Added
- 03. 24. 23 LEDs added, Fogger swapped out
- 03. 28. 23 LEDs added, barrels swapped out
- 04. 07. 23 Added chn 404-9 for aisles, removed pars on MainCat



MYTHS AND HYMNS

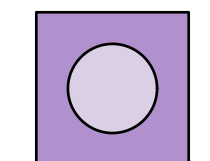
Written by: Adam Guettel

- DIRECTOR**
EVANGELINE WHITLOCK
- SCENIC DESIGNER**
LILY TOMASIC
- COSTUME DESIGNER**
ZOE COX
- WIG AND MAKEUP DESIGNER**
BEKAH TOONE
- SOUND DESIGNER**
KATELYN GILLETE
- ASST. LIGHTING DESIGNER**
ASH NEECE
- ASST. LIGHTING DESIGNER**
CLAIRE WINSTON
- HEAD ELECTRICIAN**
AUDREY WUBBENA

VIRGINIA JACKSON BROWNING THEATER

LORETTO-HILTON CENTER FOR THE PERFORMING ARTS
130 EDGAR RD ST. LOUIS, MO 63119

LIGHTING DESIGN & DRAFTED BY:

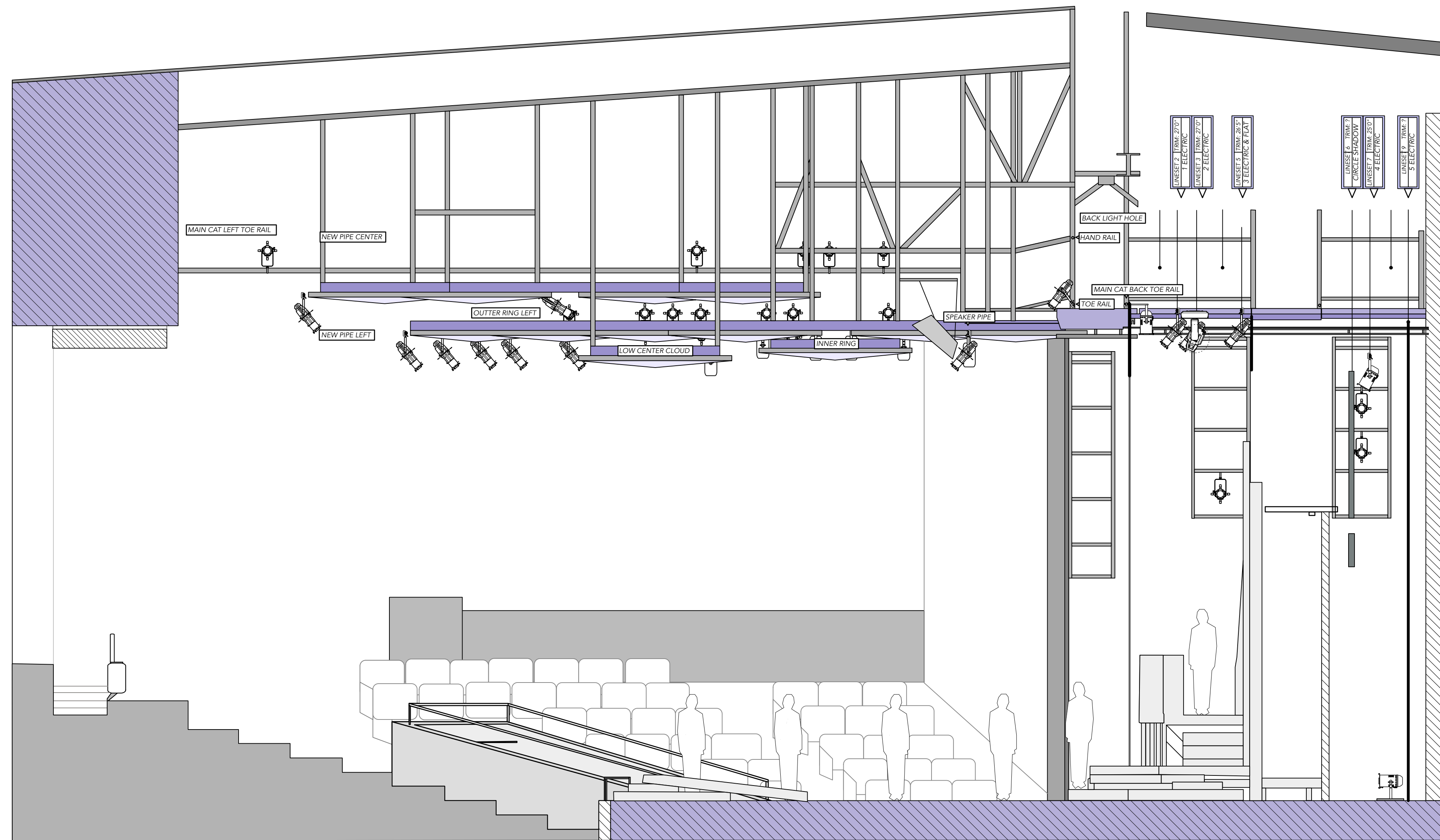


ERIN RILEY
314.933.0623
erinriley031@gmail.com









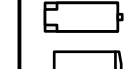
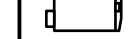
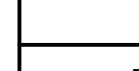
DECK PLOT

PLATE
2 OF **4**

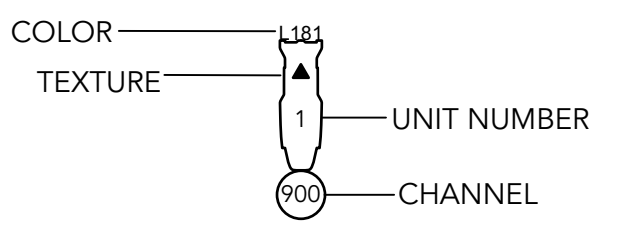
SCALE: 1/4" = 1'-0"
WHEN PRINTED ON 24x36





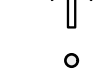
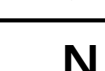
INSTRUMENT KEY

-  ETC Source Four 14 Degree 750w
-  ETC Source Four 19 Degree 750w
-  ETC Source Four 26 Degree 750w
-  ETC Source Four 36 Degree 750w
-  Altmann Par 64 MFL 1000w
-  Altmann Par 64 WFL 1000w
-  Chauvet Ovation F915 260w
-  Chauvet Revo E-3 260w
-  Martin MAC Viper 1225w
-  MDG ATMe Hazer
-  ADJ Entour Chill 800w

LABEL LEGEND



ACCESSORY KEY

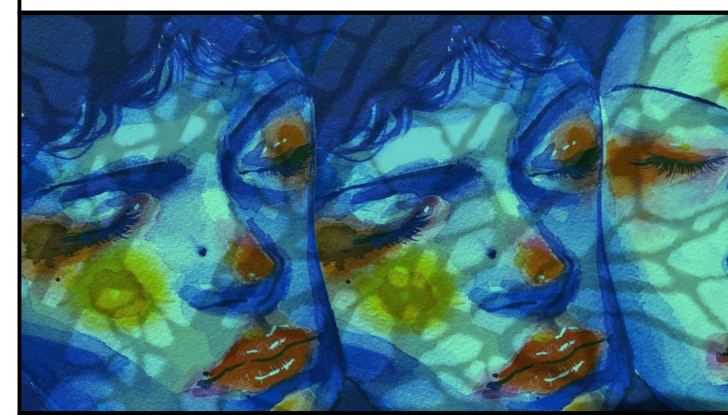
-  Drop-in Iris
-  10in Top Hat
-  Rosco I-Cue
-  DMX Iris

NOTES

- Please put all channels on Main Cat Back on side arms
- Please patch all Ovation 915 FC's in 18ch mode
- Please have extra cuts of color, frost, texture, and heat shield ready at focus

REVISIONS

02.28.23	Prelim
03.01.23	String lights Added
03.24.23	LEDs added, Fogger swapped out
03.28.23	LEDs added, barrels swapped out to meet inventory



MYTHS AND HYMNS

Written by: Adam Guettel

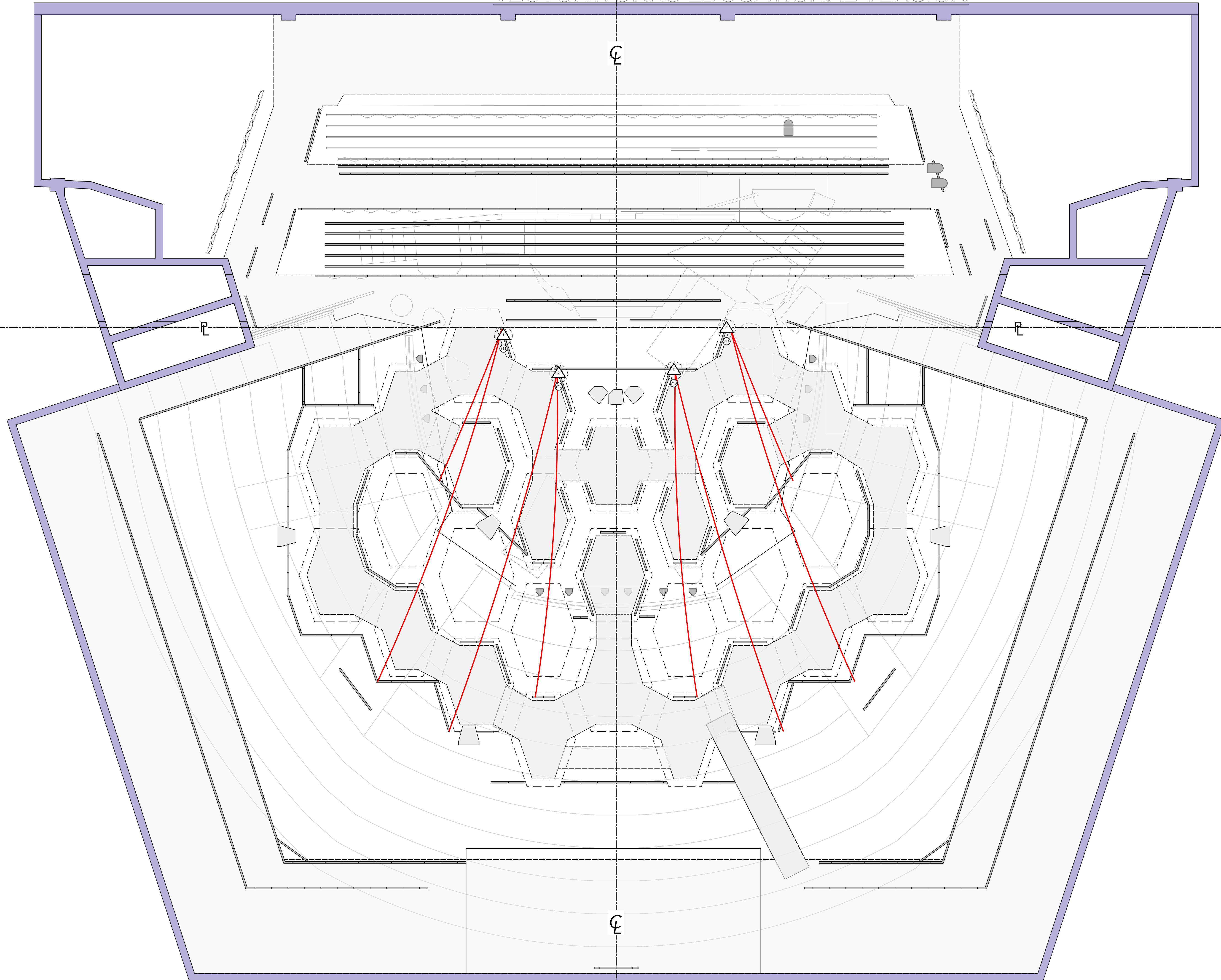
- DIRECTOR**
EVANGELINE WHITLOCK
- SCENIC DESIGNER**
LILY TOMASIC
- COSTUME DESIGNER**
ZOE COX
- WIG AND MAKEUP DESIGNER**
BEKAH TOONE
- SOUND DESIGNER**
KATELYN GILLETE
- ASST. LIGHTING DESIGNER**
ASH NEECE
- ASST. LIGHTING DESIGNER**
CLAIRE WINSTON
- HEAD ELECTRICIAN**
AUDREY WUBBENA

VIRGINIA JACKSON BROWNING THEATER
LORETTO-HILTON CENTER FOR THE PERFORMING ARTS
130 EDGAR RD ST. LOUIS, MO 63119

LIGHTING DESIGN & DRAFTED BY:
 **ERIN RILEY**
314.933.0623
erinriley031@gmail.com

SR SECTION

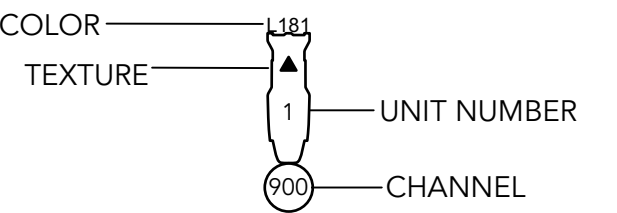
PLATE
4 OF **4**
SCALE: 1/4" = 1'-0"
WHEN PRINTED ON 24x36



INSTRUMENT KEY

- ETC Source Four 14 Degree 750w
- ETC Source Four 19 Degree 750w
- ETC Source Four 24 Degree 750w
- ETC Source Four 30 Degree 750w
- Altmann Par 64 WFL 1000w
- Altmann Par 64 WFL 1000w
- Chauvet Ovation P915 260w
- Chauvet Rave E-3 260w
- Martin MAC Viper 1225w
- MDG ATMe Hazer
- ADJ Entour Chill 800w

LABEL LEGEND



ACCESSORY KEY

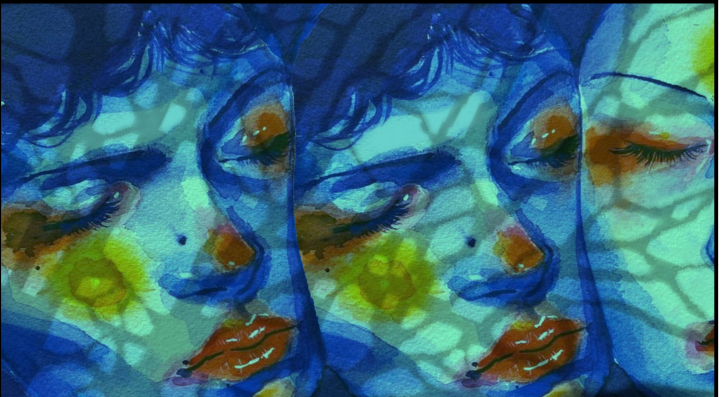
- Drop-in Iris
- 10in Top Hat
- Rosco I-Cue
- DMX Iris

NOTES

- Please put all channels on Main Cat Back on side arms
- Please patch all Ovation 915 FC's in 18ch mode
- Please have extra cuts of color, frost, texture, and heat shield ready at focus

REVISIONS

- 02. 28. 23 Prelim
- 03. 01. 23 String lights Added
- 03. 24. 23 LEDs added, Fogger swapped out
- 03. 28. 23 LEDs added, barrels swapped out
- 04. 07. 23 Added chn 404-9 for aisles, removed pars on MainCat



MYTHS AND HYMNS

Written by: Adam Guettel

DIRECTOR

EVANGELINE WHITLOCK

SCENIC DESIGNER

LILY TOMASIC

COSTUME DESIGNER

ZOIE COX

WIG AND MAKEUP DESIGNER

BEKAH TOONE

SOUND DESIGNER

KATELYN GILLETE

ASST. LIGHTING DESIGNER

ASH NEECE

ASST. LIGHTING DESIGNER

CLAIRE WINSTON

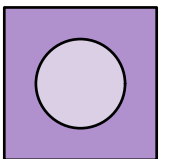
HEAD ELECTRICIAN

AUDREY WUBBENA

VIRGINIA JACKSON BROWNING THEATER

LOBETTO-HILTON CENTER FOR THE PERFORMING ARTS
130 EDGAR RD ST. LOUIS, MO 63119

LIGHTING DESIGN & DRAFTED BY:



ERIN RILEY
314.933.0623
erinriley031@gmail.com

HANGING PRACTICALS

PLATE

3

OF 4

SCALE: 1/4" = 1'-0"

WHEN PRINTED ON 24x36