

INSTRUMENT KEY

- ETC Source Four 26 Degree 575w
- ETC Source Four 36 Degree 575w
- ETC Source Four 50 Degree 575w
- WFL Source Four Par 575w
- Altman 6in Fresnel 500w
- MR-16 Birdie 50w
- Chauvet ColorDash Par Quad 7 74w
- Chauvet Ovation F-415FC 260w
- 4ft RGBW LED Tape Fluorescent Tube 24w
- House Light
- Color Kinetics Color Blaze 72 420w

LABEL LEGEND

- UNIT NUMBER
- COLOR CHANNEL
- TEXTURE

ACCESSORY KEY

- Sidearm
- 2" Barndoor
- Short Top Hat

NOTES

- Please patch all Ovation F-415FC's in 18ch mode
- Please have long cuts of frost for the strip lights under the seating platforms
- Please have extra cuts of color, frost, texture, and heat shield ready at focus

REVISIONS

01.09.24	Prelim
01.24.24	Final



The Last Days of Judas Iscariot
 Written by: Stephen Adly Guirgis

DIRECTOR
ADAM FLORES

SCENIC DESIGNER
ANABEL WEILAND

COSTUME DESIGNER
IVAN NGUYEN

WIG AND MAKEUP DESIGNER
TIANA OSBORNE

SOUND DESIGNER
KATIE STUCKY

ASST. LIGHTING DESIGNER
AVERY KELLEY

HEAD ELECTRICIAN
CLAIRE WINSTON

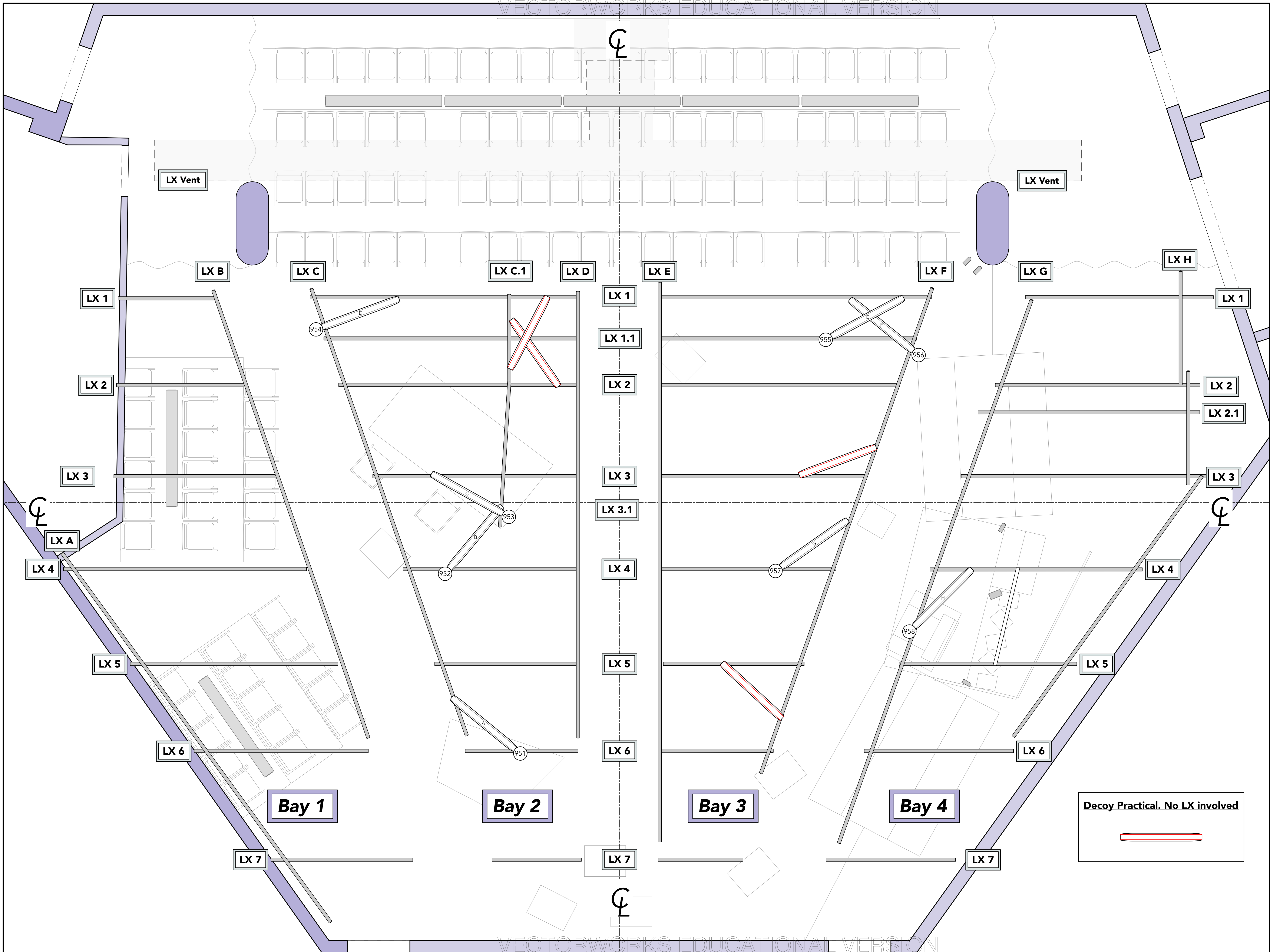
EMERSON STUDIO THEATRE
 LORETTA-HILTON CENTER FOR THE PERFORMING ARTS
 130 EDGAR RD ST. LOUIS, MO 63119

DESIGN & DRAFTING BY:

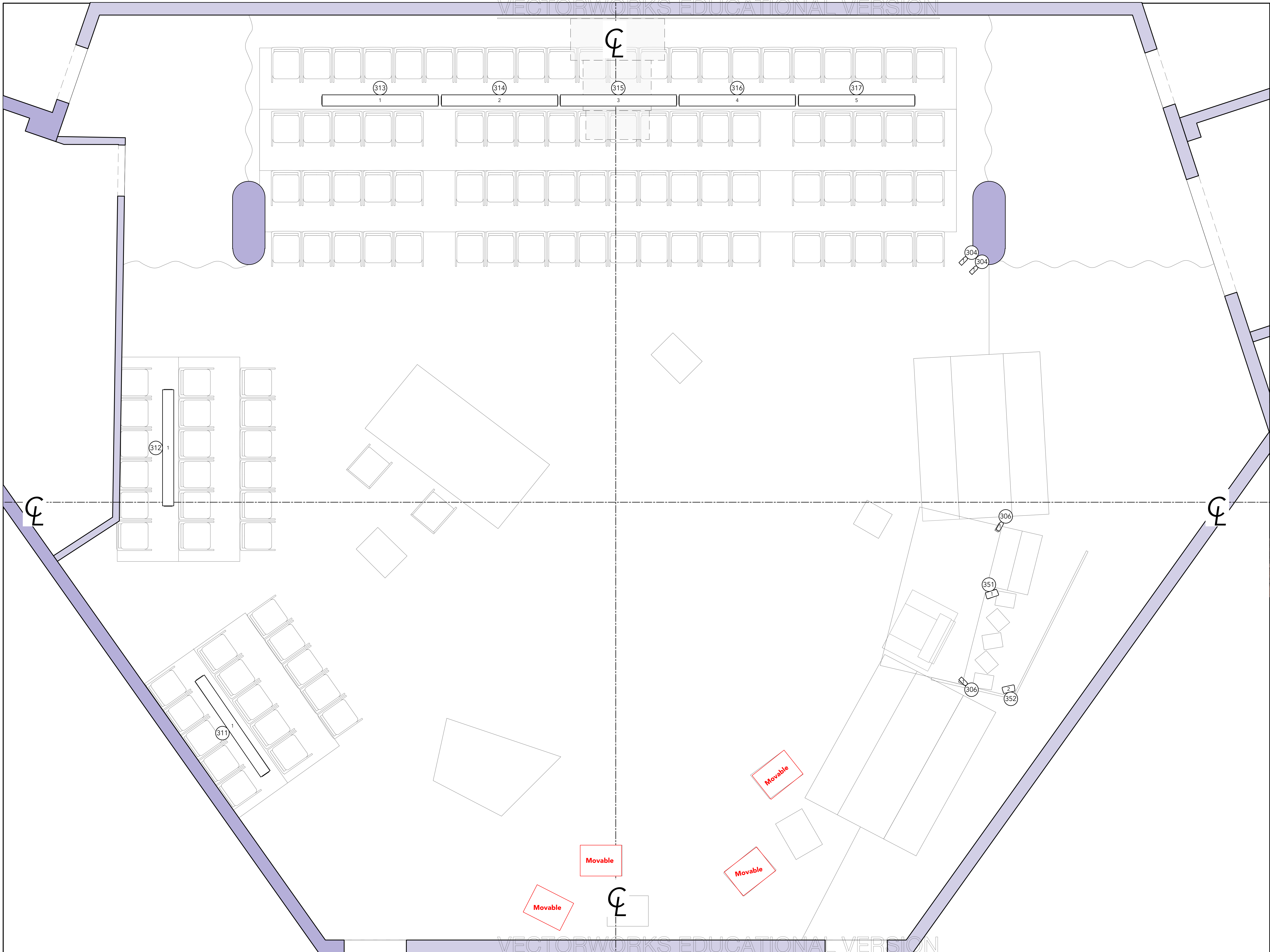
ERIN RILEY
 314.933.0623
 erinriley031@gmail.com

OVERHEAD PLOT



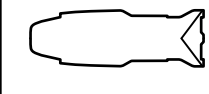



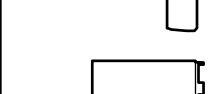

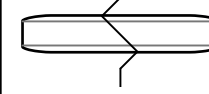

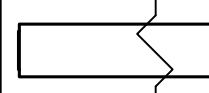
PLATE **1** OF 4
 SCALE: 1/2" = 1'-0"
 WHEN PRINTED ON 24x36



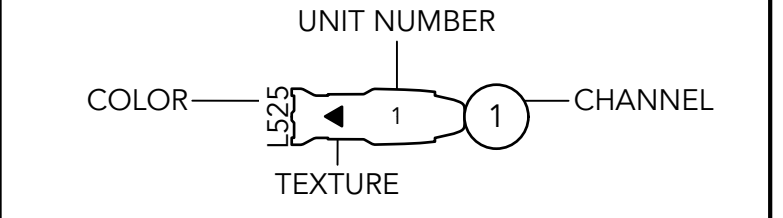
INSTRUMENT KEY	
	ETC Source Four 26 Degree 575w
	ETC Source Four 36 Degree 575w
	ETC Source Four 50 Degree 575w
	WFL Source Four Par 575w
	Altman 6in Fresnel 500w
	MR-16 Birdie 50w
	Chauvet ColorDash Par Quad 7 74w
	Chauvet Ovation F-415FC 260w
	4ft RGBW LED Tape Fluorescent Tube 24w
	House Light
	Color Kinetics Color Blaze 72 420w
LABEL LEGEND	
	UNIT NUMBER
	COLOR → 1 → 1 CHANNEL
	TEXTURE
ACCESSORY KEY	
	Sidearm
	2" Barndoor
	Short Top Hat
NOTES	
<ul style="list-style-type: none"> Please patch all Ovation F-415FC's in 18ch mode Please have long cuts of frost for the strip lights under the seating platforms Please have extra cuts of color, frost, texture, and heat shield ready at focus 	
REVISIONS	
01. 09. 24	Prelim
01. 24. 24	Final
<h3>The Last Days of Judas Iscariot</h3> <p>Written by: Stephen Adly Guirgis</p> <p>DIRECTOR ADAM FLORES</p> <p>SCENIC DESIGNER ANABEL WEILAND</p> <p>COSTUME DESIGNER IVAN NGUYEN</p> <p>WIG AND MAKEUP DESIGNER TIANA OSBORNE</p> <p>SOUND DESIGNER KATIE STUCKY</p> <p>ASST. LIGHTING DESIGNER AVERY KELLEY</p> <p>HEAD ELECTRICIAN CLAIRE WINSTON</p>	
<p>EMERSON STUDIO THEATRE LORETTO-HILTON CENTER FOR THE PERFORMING ARTS 130 EDGAR RD ST. LOUIS, MO 63119</p>	
<p>DESIGN & DRAFTING BY:</p> <div style="display: flex; align-items: center;"> <p>ERIN RILEY 3 1 4 . 9 3 3 . 0 6 2 3 erinriley031@gmail.com</p> </div>	
<h2>PRACTICAL PLOT</h2>	
<p>PLATE 2 OF 4</p>	<p>SCALE: 1/2" = 1'-0" WHEN PRINTED ON 24x36</p>



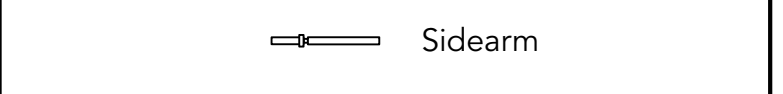
INSTRUMENT KEY

-  ETC Source Four 26 Degree 575w
-  ETC Source Four 36 Degree 575w
-  ETC Source Four 50 Degree 575w
-  WFL Source Four Par 575w
-  Altman 6in Fresnel 500w
-  MR-16 Birdie 50w
-  Chauvet ColorDash Par Quad 7 74w
-  Chauvet Ovation F-415FC 260w
-  4ft RGBW LED Tape Fluorescent Tube 24w
-  House Light
-  Color Kinetics Color Blaze 72 420w

LABEL LEGEND



ACCESSORY KEY



NOTES

- ▣ Please patch all Ovation F-415FC's in 18ch mode
- ▣ Please have long cuts of frost for the strip lights under the seating platforms
- ▣ Please have extra cuts of color, frost, texture, and heat shield ready at focus

REVISIONS

01. 09. 24	Prelim
01. 19. 24	Final



The Last Days of Judas Iscariot

Written by: Stephen Adly Guirgis

DIRECTOR
ADAM FLORES

SCENIC DESIGNER
ANABEL WEILAND

COSTUME DESIGNER
IVAN NGUYEN

WIG AND MAKEUP DESIGNER
TIANA OSBORNE

SOUND DESIGNER
KATIE STUCKY

ASST. LIGHTING DESIGNER
AVERY KELLEY

HEAD ELECTRICIAN
CLAIRE WINSTON

EMERSON STUDIO THEATRE
LORETTA-HILTON CENTER FOR THE PERFORMING ARTS
130 EDGAR RD ST. LOUIS, MO 63119

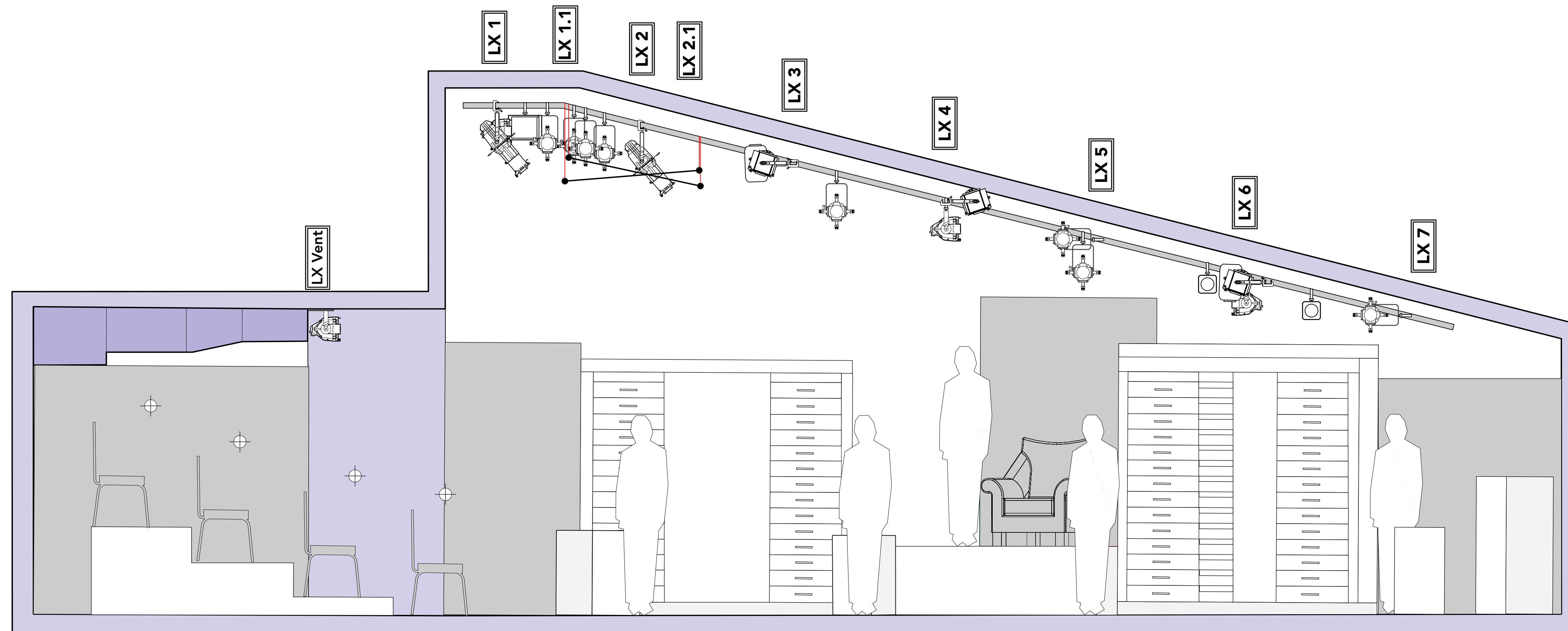
DESIGN & DRAFTING BY:

 **ERIN RILEY**
314.933.0623
erinriley031@gmail.com

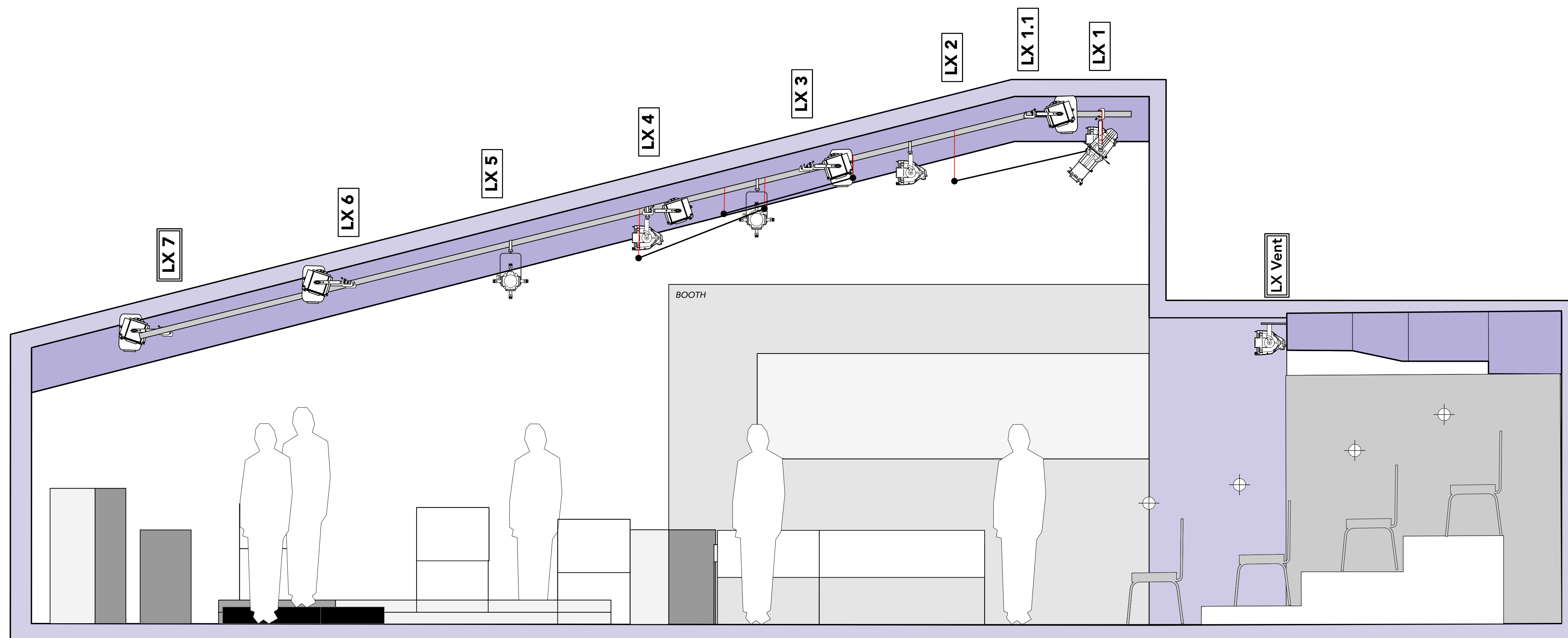
DECK PLOT

PLATE **3** OF 4

SCALE: 1/2" = 1'-0"
WHEN PRINTED ON 24x36



East Centerline Section
Scale: 1/2" = 1'0"

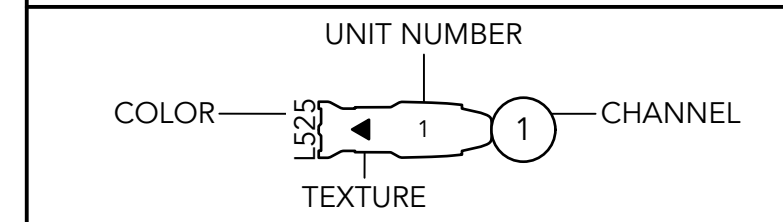


West Centerline Section
Scale : 1/2" = 1'0"

INSTRUMENT KEY

- ETC Source Four 26 Degree 575w
- ETC Source Four 36 Degree 575w
- ETC Source Four 50 Degree 575w
- WFL Source Four Par 575w
- Altman 6in Fresnel 500w
- MR-16 Birdie 50w
- Chauvet ColorDash Par Quad 7 74w
- Chauvet Ovation F-415FC 260w
- 4ft RGBW LED Tape Fluorescent Tube 24w
- House Light
- Color Kinetics Color Blaze 72 420w

LABEL LEGEND



ACCESSORY KEY

- Sidearm

NOTES

- ▣ Please patch all Ovation F-415FC's in 18ch mode
- ▣ Please have long cuts of frost for the strip lights under the seating platforms
- ▣ Please have extra cuts of color, frost, texture, and heat shield ready at focus

REVISIONS

01. 09. 24	Prelim
01. 19. 24	Final



The Last Days of Judas Iscariot

Written by: Stephen Adly Guirgis

- DIRECTOR**
ADAM FLORES
- SCENIC DESIGNER**
ANABEL WEILAND
- COSTUME DESIGNER**
IVAN NGUYEN
- WIG AND MAKEUP DESIGNER**
TIANA OSBORNE
- SOUND DESIGNER**
KATIE STUCKY
- ASST. LIGHTING DESIGNER**
AVERY KELLEY
- HEAD ELECTRICIAN**
CLAIRE WINSTON

EMERSON STUDIO THEATRE
LORETTA-HILTON CENTER FOR THE PERFORMING ARTS
130 EDGAR RD ST. LOUIS, MO 63119

DESIGN & DRAFTING BY:

ERIN RILEY
3 1 4 . 9 3 3 . 0 6 2 3
erinriley031@gmail.com

EAST & WEST SECTIONS

PLATE
4 OF **4**
SCALE: 1/2" = 1'-0"
WHEN PRINTED ON 24x36